

Complete cooling water blowdown plant

Conductivity measuring and control unit LF2 i2382 (for blowdown)

- ⇒ Control unit for inductive conductivity probes;
- ⇒ Range 0 – 9990 $\mu\text{S}/\text{cm}$;
- ⇒ 4-digit LED display;
- ⇒ 1 Switch contact, 1 Alarm contact;
- ⇒ Temperature compensation (adjustable, 1,5 – 3,0 % / $^{\circ}\text{C}$);
- ⇒ Operation via keyboard;
- ⇒ Adjustable potentiometer;
- ⇒ 2 adjustable limit values with hysteresis function;
- ⇒ 0/4 – 20 mA analog output;
- ⇒ LED function display.

Conductivity probe (inductive) MES 500

Range 0-20 mS/cm;
mounted in PVC-T-piece;
d = 50 mm, NW 20 with integrated temperature probe PT1000;
pressure range PN 10 at max. 40 $^{\circ}\text{C}$.



PVC-board 400 x 600 mm with complete pipework and engine-driven blowdown valve

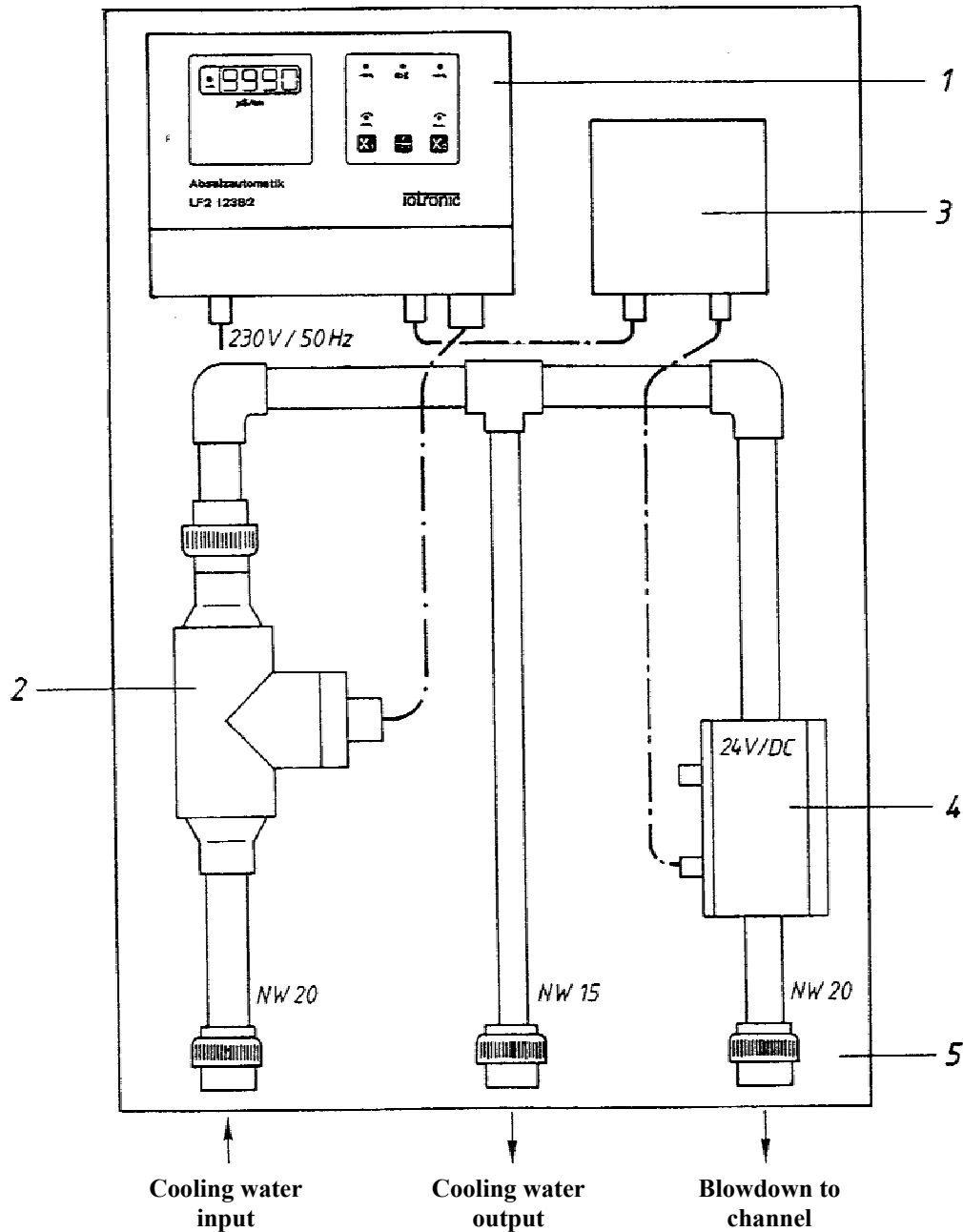
- ⇒ Prepared for the mounting of the control unit and conductivity probe;
- ⇒ NW 15 for bypass; NW 20 for blowdown pipework;
- ⇒ Material for pipework and valves: PVC;
- ⇒ Connection to cooling system via sockets;
- ⇒ Cooling water input NW 20, cooling water output NW 15, blowdown NW 20.

Complete blowdown system (Order No. 410 2382 01)

All components mounted on plate and ready to use.

Technical data subject to change !

Cooling Water Blowdown Plant



1. Conductivity measuring and control unit LF2 i2382 (Order No. 601 2382 01)
2. Inductive conductivity probe MES 500 (Order No. 330 500 01)
3. Power supply blowdown valve
4. Engine-driven blowdown valve
5. PVC-board 400x600 mm, complete with pipework